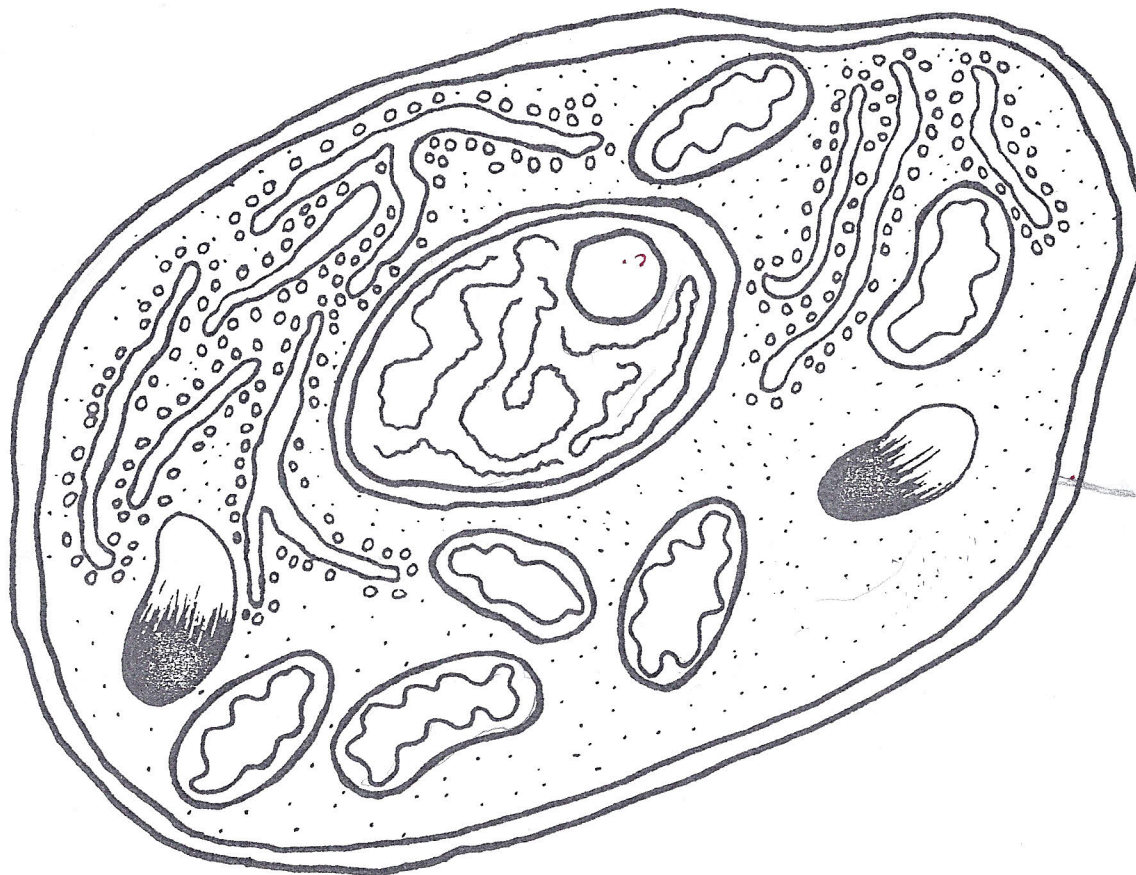


THE ANIMAL CELL

Use the list below to identify all parts on the illustration of the cell.

- | | |
|---------------------|------------------|
| 1. Cell membrane | 6. DNA and genes |
| 2. Nucleus | 7. Vacuoles |
| 3. Nuclear membrane | 8. Ribosomes |
| 4. Nucleoplasm | 9. Mitochondria |
| 5. Cytoplasm | 10. Nucleolus |



On the back of the activity sheet describe the job each of the above does in the cell.