

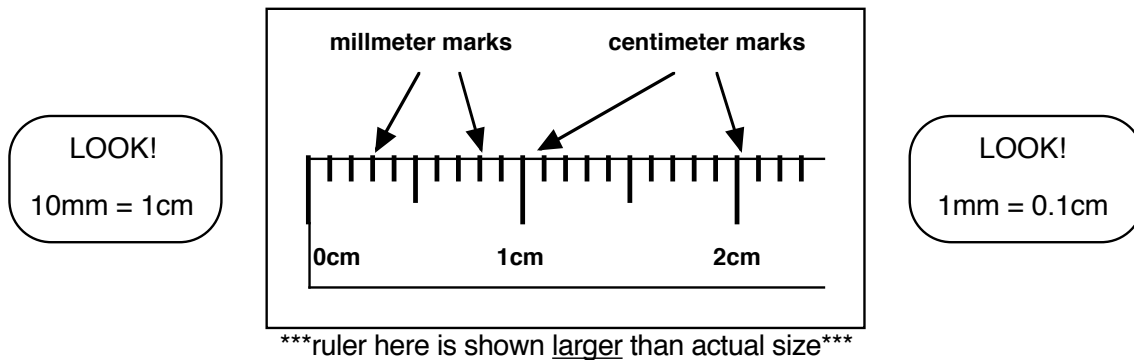
Science Skill Sheet—Reading a metric ruler

From your science teacher to help you out!

You will be asked to use pieces of lab equipment carefully and accurately. This is important so that you can take good measurements and get good results. One piece of equipment that is used to measure length is a **metric ruler**. When using one of these, you should know how to read it correctly. Keep this sheet in your binder to help you remember how to do it!

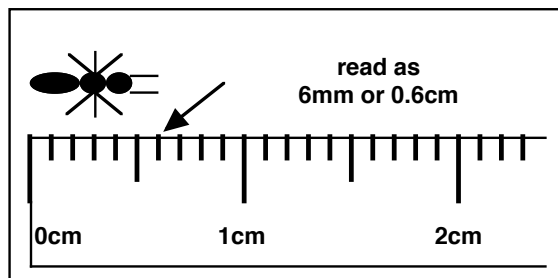
Stuff to remember

- Start your measurement by placing the line above the “0 cm” mark on the ruler at the edge of the object you want to measure. *The ruler might instead have a “0 mm” mark; use it the same way.*
- On a metric ruler, there are usually two sets of different metric lines you need to read. Make sure that you are reading the correct ones for the measurement you need to take!

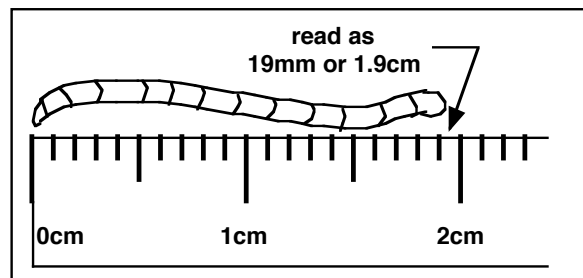


- The short tiny lines that are really close together are millimeter (mm) marks. These are counted from zero when measuring really small stuff.
- The longer lines that are spaced apart more are centimeter (cm) marks. When making a measurement, these marks are counted from zero up to the last whole centimeter. Next, tenths of a centimeter (millimeters—those short tiny lines) are counted from the last whole centimeter and then added to the centimeter reading in the tenths place.

EXAMPLE 1—an ant



EXAMPLE 2—a worm



rulers here are shown larger than actual size